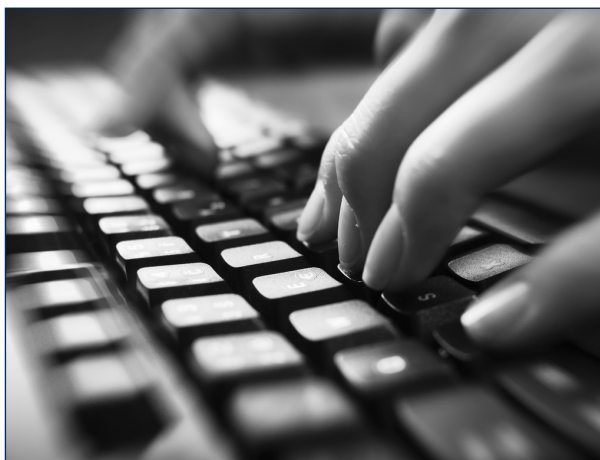


## COMPUTER REQUIREMENTS

- **A computer capable of running current software and web browsers.**
  - For PC: Windows XP or higher
  - For Mac: Mac OS X, version 10.3 or higher
- **Internet access**
  - 56 kbps modem (DSL or cable modem strongly recommended)
  - Web browser (Firefox 3 or higher)
- **Additional Software or Plug-ins:**
  - Microsoft Office 2000 or higher / Microsoft Open Office (alternative)
  - Adobe Acrobat Reader
- **Important Media Players**
  - Flash player
  - For PC user: Windows Media Player
  - For Mac user: Quick Time Player

Non-Profit Org.  
US POSTAGE  
**PAID**  
Manchester, NH  
Permit #6035



Additional program information is available on our website:

[WWW.ANSELM.EDU/CNE](http://WWW.ANSELM.EDU/CNE)



[www.facebook.com/cne.saintanselm](http://www.facebook.com/cne.saintanselm)

 SAINT ANSELM  
COLLEGE

CONTINUING NURSING EDUCATION  
100 Saint Anselm Drive  
Manchester, NH 03102-1310

Change Service Requested



[www.facebook.com/cne.saintanselm](http://www.facebook.com/cne.saintanselm)

visit us online:  
[www.anselm.edu/cne](http://www.anselm.edu/cne)

ADVNUCERT2018

Please note  
these **NEW**  
dates!

*Looking  
through the  
Leadership Lens*

**2018**  
**ADVANCED  
NURSING  
LEADERSHIP  
CERTIFICATE**



Provided by:



SAINT ANSELM  
COLLEGE

CONTINUING NURSING EDUCATION

Committed to Advancing the Practice of Nursing

## PROGRAM DESCRIPTION

**DESCRIPTION:** This innovative hybrid online certificate program is designed to explore the various components to develop a nurse leader, whose goal is to enhance and empower oneself in advancing the future of the nursing profession.

**WHO:** Any nurse who practices in a leadership role, including but not limited to, nurse educators, clinical nurse managers, charge nurses, supervisors and directors. Staff nurses with 5 years' experience interested in seeking a leadership role should consider this offering.

The content will prepare the nurse leader to sit for the following national certifications: American Organization of Nurse Executives: Nurse Manager and Leader, Certificate in Executive Nurse Practice, and/ or American Nurses Credentialing Center: Nurse Executive Board Certified provided the applicant meets the eligibility requirements for these specific exams.

**WHAT:** In order to receive this 60-hour certificate (equal to 60 contact hours), completion of the four modules is required. Each module is 15 contact hours and is taught in a hybrid format: 6 hours classroom, 9 hours online utilizing discussion boards and case studies, and required reading over the course of 4 weeks in an asynchronous manner.

**CANCELLATION:** A \$30 processing fee will be charged when cancelled at least 7 business days prior to conference. No refunds given with less than 7-day notice.

## QUESTIONS?

Please contact Gina Gulino-Payne at 603-641-7086 or ggulinopayne@anselm.edu. To register, please visit our website at [www.anselm.edu/cne](http://www.anselm.edu/cne).

[WWW.ANSELM.EDU/CNE](http://WWW.ANSELM.EDU/CNE)

## SCHEDULE: 2018

### MODULE 1: LEADERSHIP AND THE PROFESSION OF NURSING

MARCH 1-28, 2018 • 15 CONTACT HOURS • FEE: \$284

Thursday, March 1: 8:30-4:00 pm at Saint Anselm College; remainder of program online

*Topics include:* role modeling/coaching; vision/influence; leadership and management differences; facilitating change

### MODULE 2: LEADING PEOPLE: ART OF TRULY BEING PRESENT

APRIL 19-MAY 16, 2018 • 15 CONTACT HOURS • FEE: \$284

Thursday, April 19: 8:30-4:00 pm at Saint Anselm College; remainder of program online

*Topics include:* communication skills; shared decision-making; conflict resolution; relationship building

### MODULE 3: BLENDING MISSION AND MARGIN: BUSINESS SKILLS FOR THE NURSE LEADER

SEPTEMBER 20-OCTOBER 17, 2018 • 15 CONTACT HOURS • FEE: \$284

Thursday, September 20: 8:30-4:00 pm at Saint Anselm College; remainder of program online

*Topics include:* systems-based thinking; data management; financial implications of care; accountable care organizations

### MODULE 4: FUTURE OF NURSING: QUALITY, HEALTHCARE POLICY, AND PATIENT OUTCOMES

NOVEMBER 1-30, 2018 • 15 CONTACT HOURS • FEE: \$284

Thursday, November 1: 8:30-4:00 pm at Saint Anselm College; remainder of program online

*Topics include:* the role as a leader in: strategic leadership, IOM goals/nurse of the future; patient outcomes; interdisciplinary care; patient satisfaction measures

Saint Anselm College is an approved provider of continuing nursing education by the Northeast Multistate Division, an accredited approver by the American Nurses Credentialing Center's Commission on Accreditation.

## REGISTRATION FORM ADVANCED NURSING LEADERSHIP CERTIFICATE

**MAIL:** Saint Anselm College  
Continuing Ed #1745  
100 Saint Anselm Drive  
Manchester, NH 03102-1310

**PHONE:** 603-641-7086,  
credit card required

**FAX:** 603-641-7089  
credit card required  
**ONLINE:** [www.anselm.edu/cne](http://www.anselm.edu/cne)  
credit card required

### PLEASE PRINT CLEARLY OR TYPE.

Name \_\_\_\_\_

Credentials \_\_\_\_\_

Home Address \_\_\_\_\_

City \_\_\_\_\_ State \_\_\_\_\_ Zip \_\_\_\_\_

Home Phone ( \_\_\_\_\_ ) \_\_\_\_\_

Work Phone ( \_\_\_\_\_ ) \_\_\_\_\_

Email \_\_\_\_\_

REQUIRED FOR CONFIRMATION

Employing Agency \_\_\_\_\_

Address \_\_\_\_\_

City \_\_\_\_\_ State \_\_\_\_\_ Zip \_\_\_\_\_

### MODULES

- |  |       |
|--|-------|
| <input type="checkbox"/> <b>1. Leadership and the Profession of Nursing:</b><br>MARCH 1-28 2018                                | \$284 |
| <input type="checkbox"/> <b>2. Leading People: The Art of Truly Being Present:</b><br>APRIL 19-MAY 16, 2018                    | \$284 |
| <input type="checkbox"/> <b>3. Blending Mission and Margin: Business Skills<br/>for the Nurse Leader: SEPT 20-OCT 17, 2018</b> | \$284 |
| <input type="checkbox"/> <b>4. Future of Nursing: Quality, Healthcare Policy,<br/>and Patient Outcomes: NOV 1-30, 2018</b>     | \$284 |

### METHOD OF PAYMENT

- ☐ Check enclosed made payable to Saint Anselm College  
in the amount of \$ \_\_\_\_\_
- ☐ I authorize the use of my credit card: ☐ VISA ☐ MasterCard

Account # \_\_\_\_\_ Exp \_\_\_\_\_

Amount Authorized: \$ \_\_\_\_\_ Date \_\_\_\_\_

Signature \_\_\_\_\_

Cut along here